

## Shifflett's Covered Area Diagram

Location:

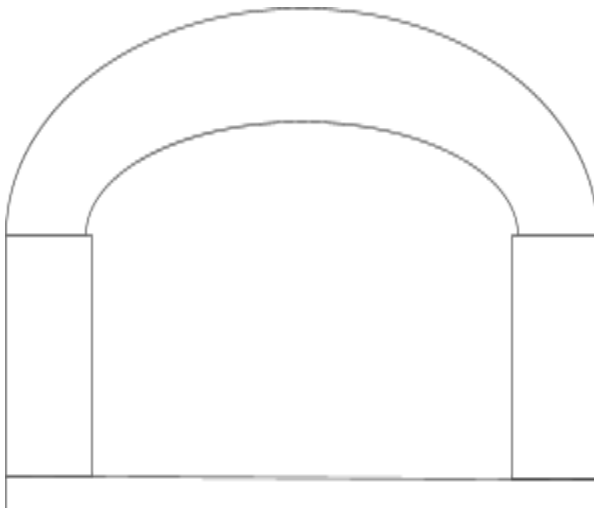


Materials:

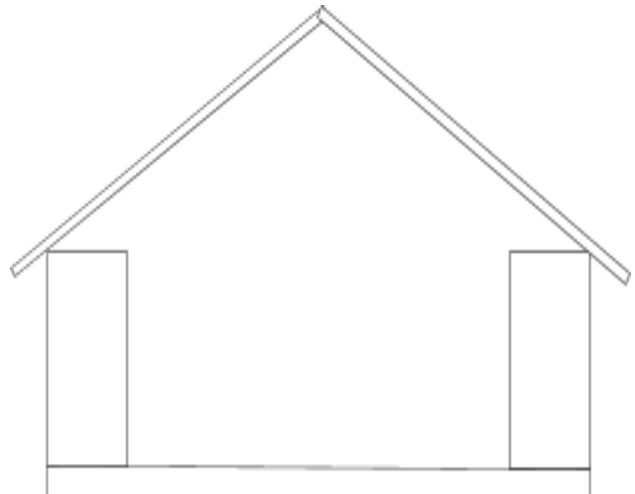
Concrete Pad: 40' x 50' (6" depth)

Container (2): 40' Steel Containers (40' x 8'6" x 9'6")

Roof: Aluminum Roofing or Tarp Cover with Truss Frame & Bolted Connections (dependent on availability and pricing)



Tarp Roof with Truss Frame



Aluminum Roof